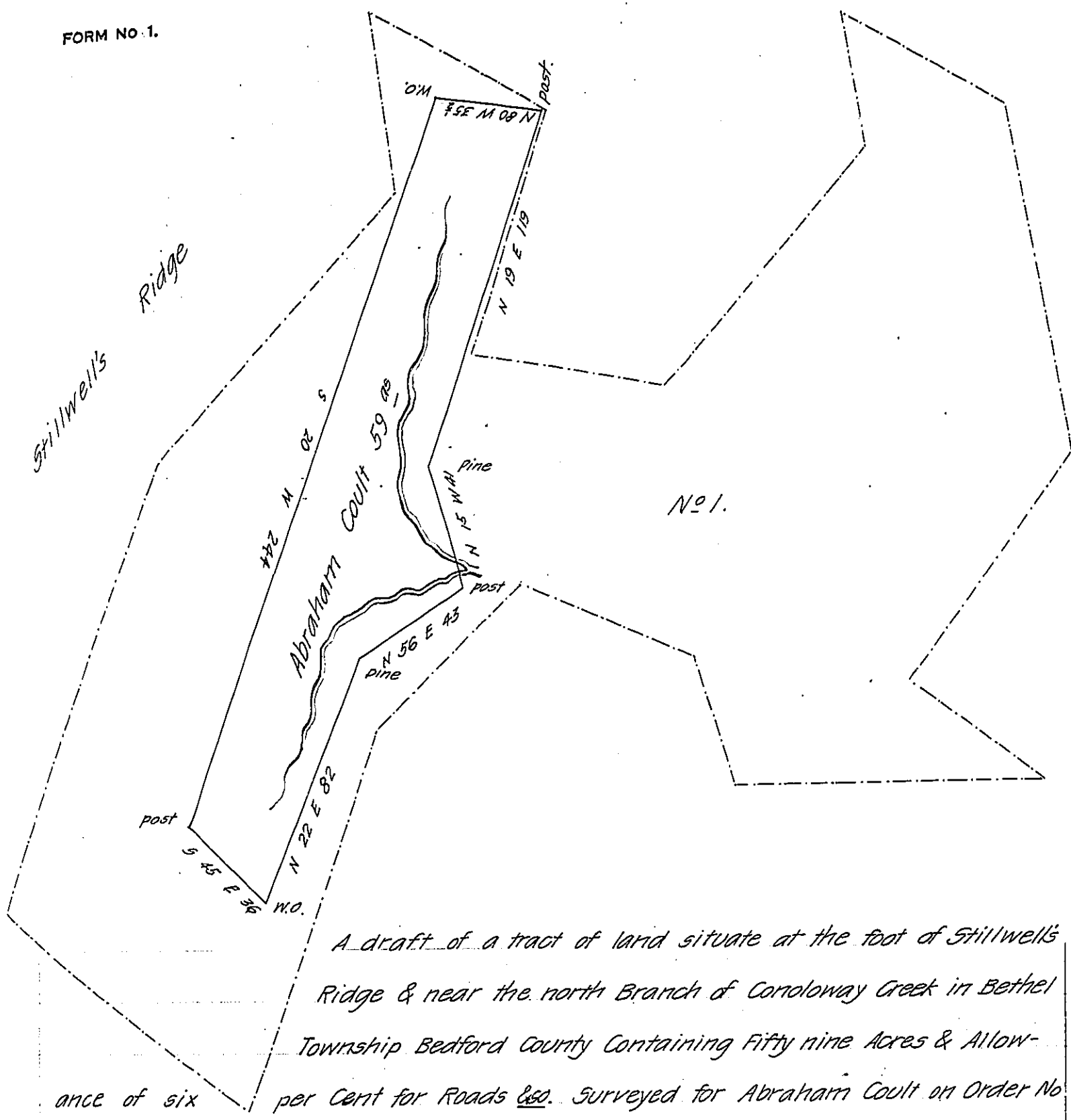


FORM NO. 1.



A draft of a tract of land situate at the foot of Stillwells Ridge & near the north Branch of Candloway Creek in Bethel Township Bedford County Containing Fifty nine Acres & Allowance of six per Cent for Roads &c. Surveyed for Abraham Coult on Order No 3312 dated the second day of April 1767.

No 1. represented by the broken lines is a draft of a tract of land surveyed for Bethual Covalt in pursuance of a Warrant dated the 11<sup>th</sup> day of May 1785. This Survey Interferes fifty nine acres with the Abraham Coult tract - Abraham Coult or Coult devised this tract to Bethual Covalt who obtained the aforesaid Warrant and then devised the same to his heirs who conveyed to Jacob Covalt the present owner.

James O'Connor D.S.

To Gabriel Heister Esq.

S. G.

B. Covalt Pat<sup>d</sup>

IN TESTIMONY that the above is a copy of the original remaining on file in the Department of Internal Affairs of Pennsylvania, made conformably to an Act of Assembly approved the 16th day of February, 1833, I have hereunto set my Hand and caused the Seal of said Department to be affixed at Harrisburg, this twenty ninth day of June 1908

*Henry Howard*  
Secretary of Internal Affairs.